



# MINI S.W.A.T.

## Separation Waste and Treatment System

### PROVEN EFFECTIVE:

Users of the MINI SWAT System have reduced their waste fluid by 90% to 98%, satisfying many requirements of state and local discharge limitations.

The MINI SWAT System is designed for easy installation and start-up and includes everything that is needed to waste treat coolants and recycle detergent wash waters.

### Total Effectiveness

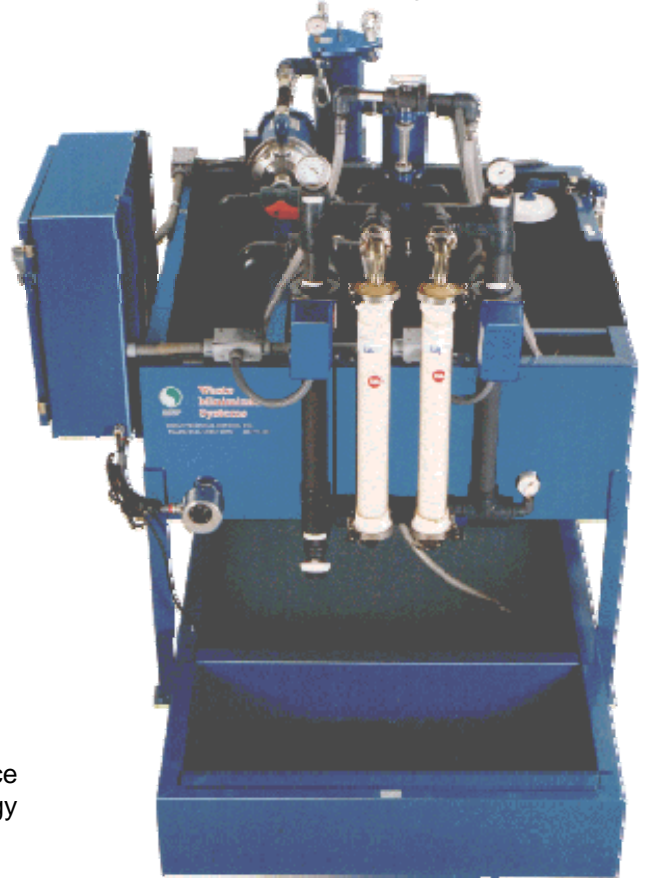
- No hazardous chemicals required
- Units fully assembled
- Highly efficient membrane modules
- Membrane cleaning system
- Timer controlled for semi-automatic operation

### Economical, Field Proven Performance

- Automatic operation
- Long membrane life
- Designed simplicity means low maintenance
- Low operating pressures for reduced energy cost
- Compact, self contained
- System pay back is typically 3 to 9 months

### Benefits

- Removes free floating and chemically bonded oil
- Separated free oils can be sold or reused
- Removes suspended solids
- Reduces waste disposal and hauling costs
- Effluent as permeate can be discharged or reused



**MINI SWAT MP-2**

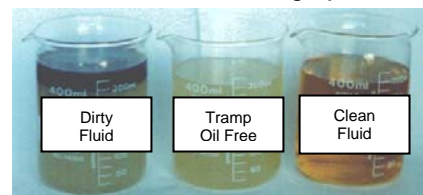
### Applications

**INDUSTRIAL PARTS WASHERS** – Clarifying acid and alkaline wash water solutions containing emulsified oils.

**WASTE WATER COLLECTION** – Emulsified oily wastewater collected from floor scrubbers, drain basins, and yard drainage.

**GENERAL APPLICATION** – Any process water or wastewater containing emulsified oils and other hydrocarbons.

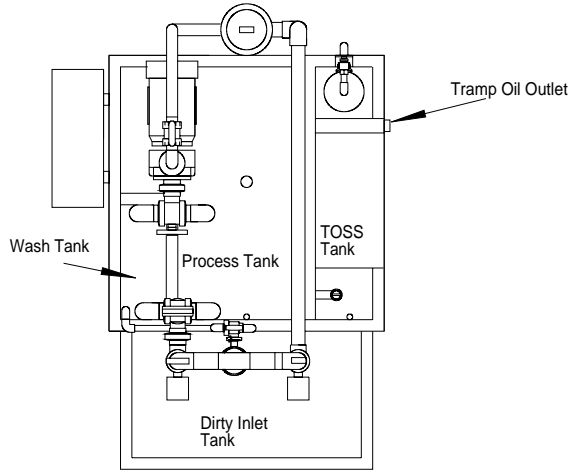
**GRINDING AND MACHINING** - Water extended cutting, grinding, drill and tapping fluids used in manufacturing operations.



**EdjeTech Services**  
 Edjean Technical Services, Inc.  
 22036 Fairgrounds Road  
 Wellington, Ohio 44090

**Ph. (800) 242-0525**  
**Fax (440) 647-2400**  
 E-mail: [sales@edjetechnology.com](mailto:sales@edjetechnology.com)  
 Web site: [www.edjetechnology.com](http://www.edjetechnology.com)

**EdgeTech  
MINI-S.W.A.T. SYSTEM  
DIMENSIONS**



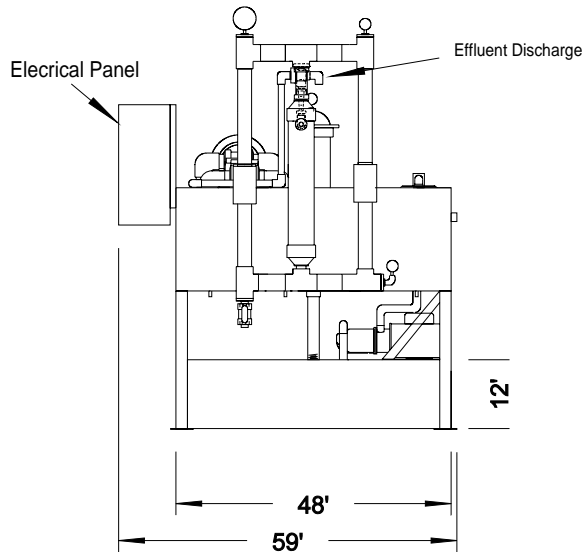
**Top View**

**Features**

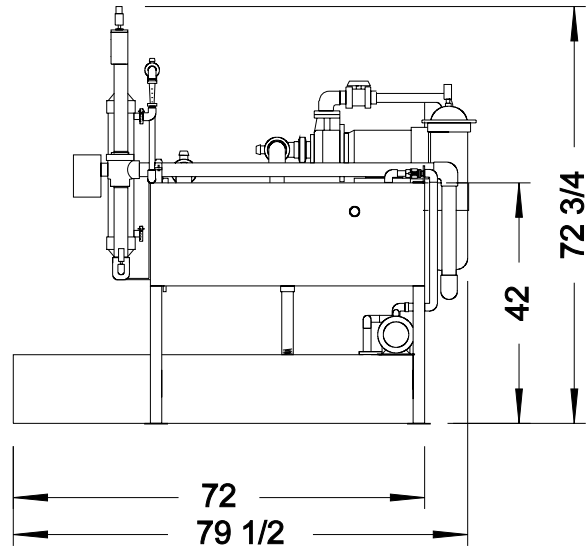
- Automated Reverse Membrane Flow
- Free-Oil Removal
- Membrane Pre-filtration
- Clean-In-Place System

**Options**

- System Pre-filtration
- System Post Filtration
- Fully Automated System



**Elevation View**



**Side View**

MODEL	Process Flow Rate (GPM) (LPM)	Gallons Processed 24 Hr. Day (GPM) (LPM)
S.W.A.T. MP-1	0.20 – 0.41 0.78 – 1.5	300-600 1135 – 2271
S.W.A.T. MP-2	0.41 – 0.83 1.5 – 3.1	600-1200 2271 - 4542